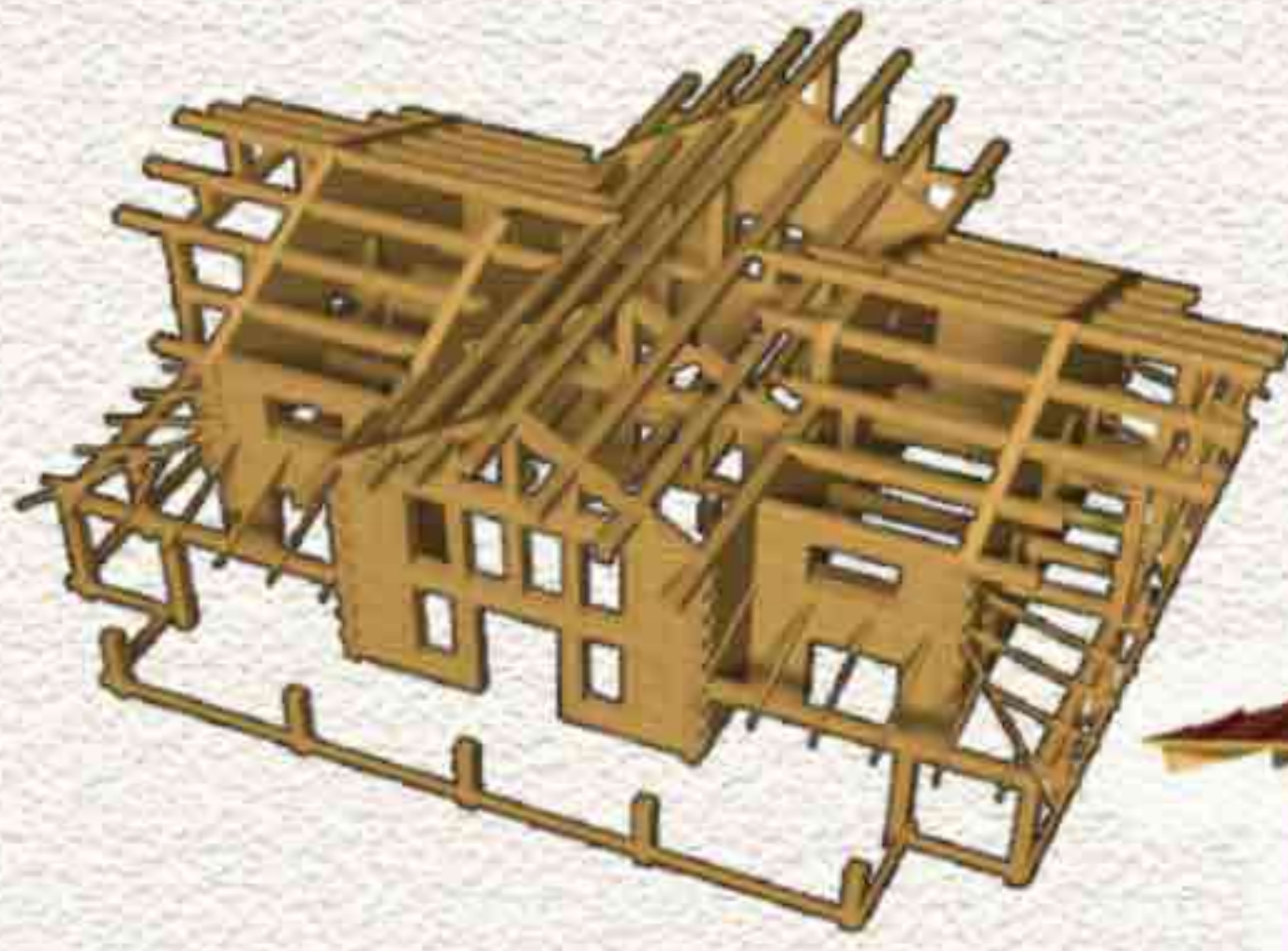
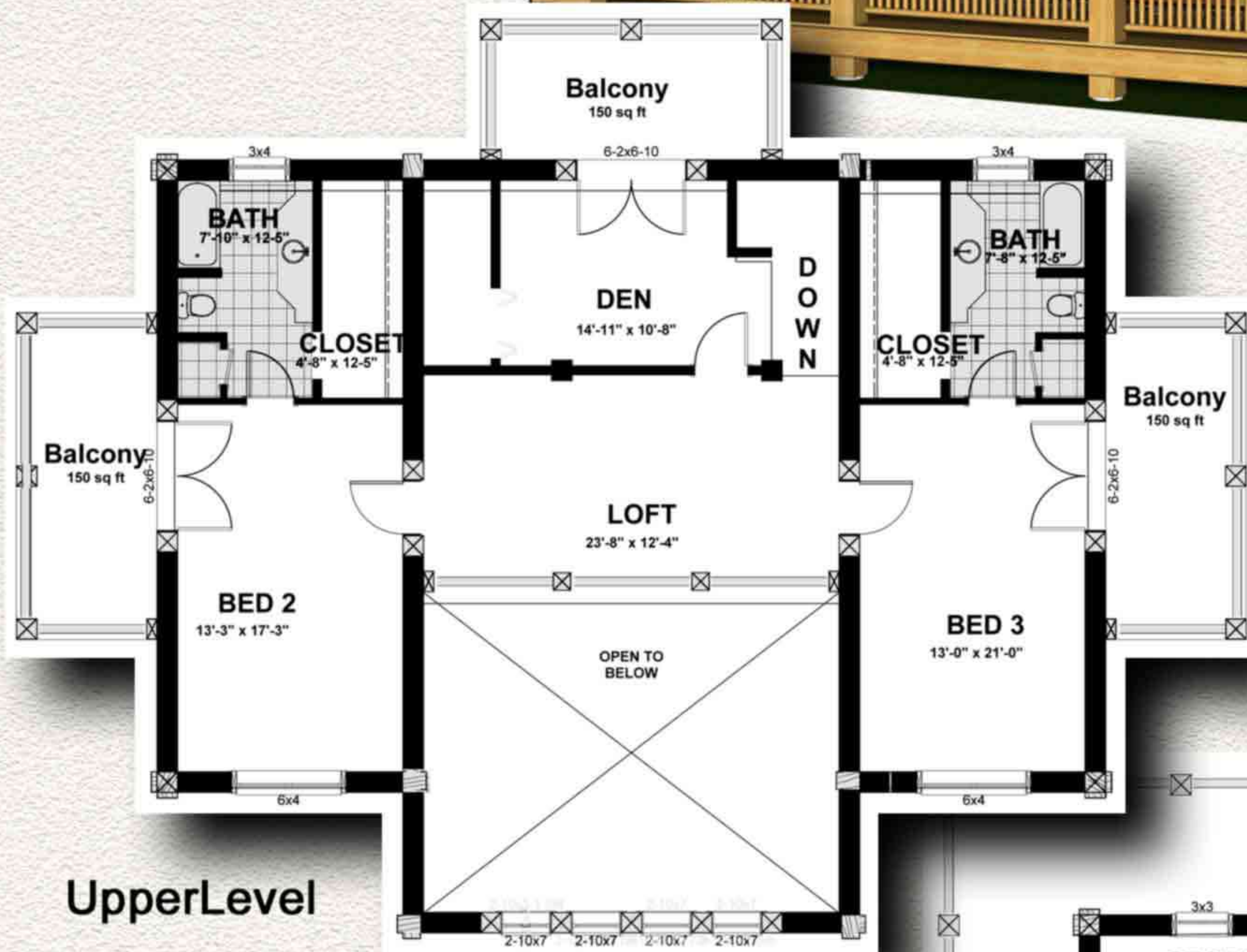


Wyoming Log Home Manufacturing Company

South Fork



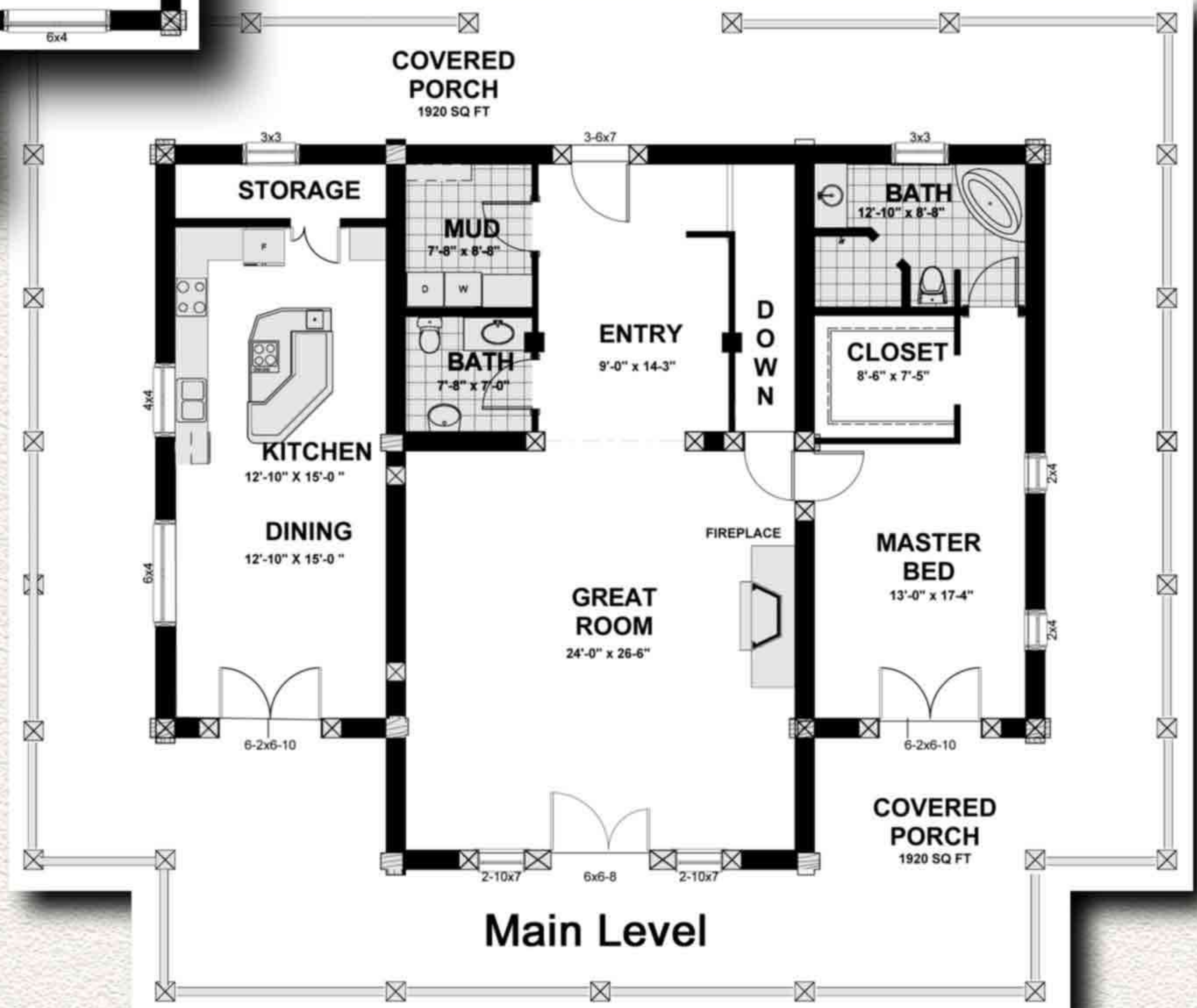
Log Package



UpperLevel

Bedrooms:	3
Baths:	4
Square Footage	
Main	2,028 sqft
Upper	1,548 sqft
Total	3,576 sqft
Porches & Balconies	2,460 sqft
Total Usable	5,736 sqft

This expansive three bedroom, 3 1/2 bath, two-level log home is a dream come true. Downstairs, the kitchen flows into the dining room, which then opens up into the great room. The large entry room gives a formal look to the front entrance along with easy access into the mudroom and half bath. The master bedroom has a large walk-in closet, spacious bath and a sliding door for access onto the porch. Upstairs are two large bedrooms with private baths and 150 sq. ft balconies. The loft area joins the bedrooms and overlooks the great room area below. With 2,160 sq. ft. of covered porches on the main level, this home is perfect for those who like to entertain.



Main Level

Wyoming Log Home Manufacturing Company
 6 Kukuchka Lane
 Ranchester WY 82839
 307-655-0800